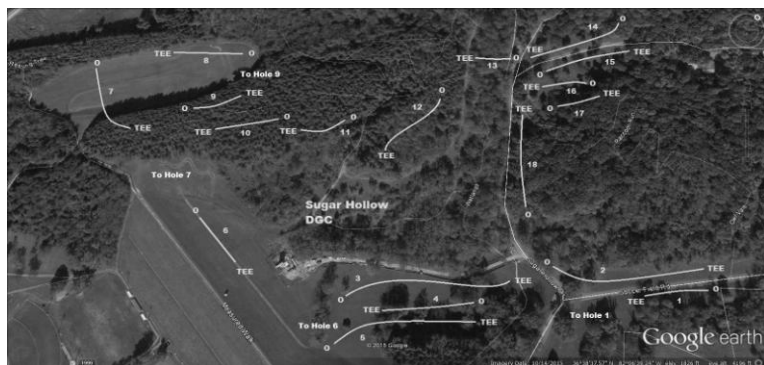


## Sugar Hollow

23261 Sugar Hollow Rd. Bristol, VA 24202



1	309	10	310
2	638	11	194
3	663	12	355
4	306	13	238
5	480	14	493
6	295	15	453
7	385	16	244
8	398	17	180
9	223	18	352
	3697		2819

### OB's and Ground Rules

Holes 1 and 2 - Road and across OB

Hole 3 - Creek on right and across OB

Hole 6 - Creek on right OB

Hole 13 - Creek, Paved walking path on right, and parking lot OB

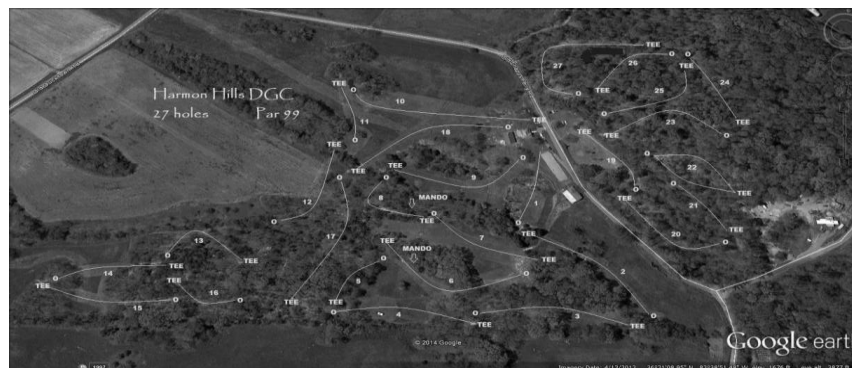
Hole 14 - Road and across OB

Hole 15 - Road and across OB

Hole 18 - Road and across OB

## Harmon Hills

7870 Old Snapps Ferry Rd Fall Branch TN



1	320	10	500
2	425	11	280
3	440	12	400
4	430	13	350
5	200	14	375
6	460	15	425
7	290	16	175
8	260	17	390
9	380	18	480
	3205		3375

### OB's and Ground Rules

Holes 2,3,4 - Barb Wire fence OB. Hole 6 - Mando, must go to right, re-tee if miss. with stroke penalty. Sinkholes between Holes 4 & 6, NOT OB, casual relief.

Hole 7 - Under cars or on pavillion, casual relief.

Hole 8 - Mando, must pass to left of arrow or re-tee with stroke penalty.

Hole 15 - Barb wire fence OB.

Hole 16 - Barb wire fence OB. Hole 18 - Old clubhouse, casual relief, no closer.

Please pack out all trash and enjoy your weekend!!





