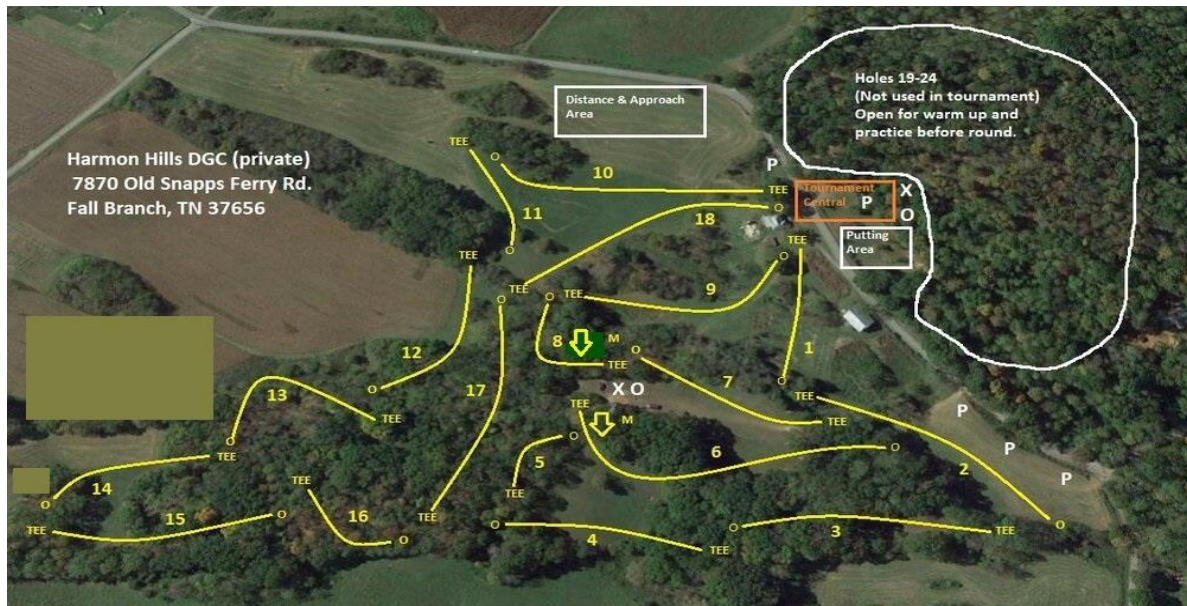


## Harmon Hills Info Sheet



Hole	Par	Length (Feet)	Tee	Target	Notes
1	3	368			Street and beyond OB
2	4	442			Parking area on left - OB, marked with wooden stakes and rope. Property line behind basket - OB, marked with wooden stakes. Sinkhole - Inside flag circle, free relief from drop zone cones, no penalty.
3	4	485			Property line on left - OB, marked with wooden stakes.
4	4	497			Property line on left - OB, marked with wooden stakes. Sinkhole - Inside flag circle, free relief from drop zone cones, no penalty.
5	3	295			Sinkhole - Inside flag circle, free relief from drop zone cones, no penalty.
6	5	747			Mando. Miss, re-tee with 1 stroke penalty. Sinkhole - Inside flag circle, free relief from drop zone cones, no penalty.
7	3	439			Pavilion area OB (marked with white painted line and white flags for visibility). Cave area - OB, marked with white rope fence. Small pit by big orange cone, free relief, no closer to hole.
8	4	339			Mando. Miss, re-tee with 1 stroke penalty. Cave area - OB, marked with white rope fence.
9	4	479			Cave area - OB, marked with white rope fence.
10	4	601			
11	3	307			
12	4	493			Sinkhole - Inside flag circle, free relief from drop zone cones, no penalty.
13	4	320			
14	3	384			
15	4	431			Property line on right - OB, marked with wooden stakes.
16	3	211			Property line on right and behind basket - OB, marked with wooden stakes.
17	4	573			Sinkhole - Inside flag circle, free relief from drop zone cones, no penalty.
18	4	564			Sinkhole in woods on right is OB, marked with white rope fence, all OB's inside fence will throw next shot from white drop zone bricks with penalty. White dog fence attached to house - OB. Construction zone near house - OB, marked with white rope fence. Beyond OB line on Hole 10 - OB.

Par 67      7975 ft