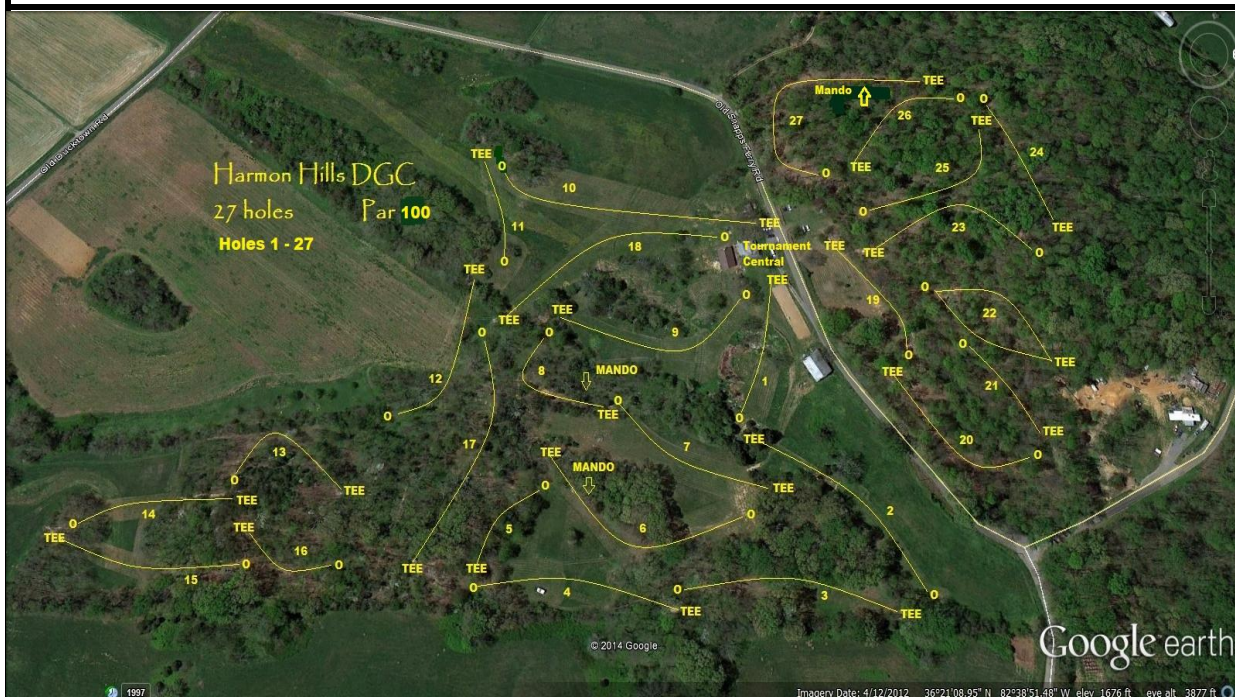


## Harmon Hills Holes 1 - 27 Info sheet



Hole	Par	Length (Feet)	Tee	Target	Notes
1	3	368			Road and beyond - OB
2	4	442			Road and beyond - OB, Wooden stakes - OB, Flag line (Parking) - OB, Sinkhole - Inside red flags, go to cones, no penalty.
3	4	485			Wooden stakes and beyond on left - OB.
4	4	482			Wooden stakes and beyond on left - OB, Sinkhole - Inside red flags, go to cones, no penalty.
5	3	295			Sinkhole - Inside red flags, go to cones, no penalty.
6	5	747			Mando left. Miss, re-tee with penalty, Sinkhole - Inside red flags, go to cones, no penalty.
7	3	439			Pavilion area (Flag line) - OB
8	4	339			Cave area - OB, Mando right. Miss, re-tee with penalty.
9	4	479			Cave area - OB, White flags around old clubhouse - OB.
10	4	601			Road and beyond - OB
11	3	307			
12	4	493			Sinkhole - Inside red flags, go to cones, no penalty.
13	4	320			
14	3	384			
15	4	431			Wooden stakes and beyond on right - OB
16	3	211			Wooden stakes and beyond on right - OB
17	4	573			Sinkhole - Inside red flags, go to cones, no penalty.
18	4	564			Sinkhole - OB (Inside white flags, go to white bricks, with penalty). White flag line and white fence - OB.
19	4	420			Road and beyond - OB
20	3	403			Road and beyond - OB
21	3	310			Wooden stakes and beyond on right - OB
22	4	364			Wooden stakes and beyond on right - OB
23	4	428			Wooden stakes and beyond on left and behind basket - OB
24	3	380			Wooden stakes and beyond on right - OB. Sinkhole - Inside red flags, go to cones, no penalty.
25	4	457			Sinkhole - Inside red flags, go to cones, no penalty.
26	3	389			Wooden stakes behind basket - OB
27	5	646			Mando left. Miss, go to Drop Zone with penalty. Wooden stakes on right - OB. Road and beyond - OB.

Par 100    11757 ft    27 holes